

 **BOEING**
COMPONENT
MAINTENANCE MANUAL

TO: ALL HOLDERS OF OFF-WING ESCAPE SYSTEM PACKBOARD ASSEMBLY COMPONENT
MAINTENANCE MANUAL 25-65-51

REVISION NO. 23 DATED MAR 01/05

HIGHLIGHTS

Pages which have been added or revised are outlined below together with the highlights of the revision. Remove and insert the affected pages as listed and enter Revision No. and date on the Record of Revision Sheet.

CHAPTER/SECTION

AND PAGE NO.

301

701

1005-1012,1018,1031

DESCRIPTION OF CHANGE

Changed washer (395, IPL Fig. 1) to BACW10UC10P to agree with the latest engineering data.

25-65-51

HIGHLIGHTS

01.1

Page 1

Mar 01/05

OFF-WING ESCAPE SYSTEM PACKBOARD ASSEMBLY
PART NUMBERS 416T2005-9,-10,-13,-14,-17 THRU
-22
416T2828-1,-2

COMPONENT MAINTENANCE MANUAL
WITH
ILLUSTRATED PARTS LIST

25-65-51

TITLE PAGE

Page 1

Mar 01/95

01.1

REVISION RECORD

- Retain this record in front of manual. On receipt of revision, insert revised pages in the manual, and enter revision number, date inserted and initial.

REVISION NUMBER	REVISION DATE	DATE FILED	BY	REVISION NUMBER	REVISION DATE	DATE FILED	BY

TEMPORARY REVISION AND SERVICE BULLETIN RECORD

BOEING SERVICE BULLETIN	BOEING TEMPORARY REVISION	OTHER DIRECTIVE	DATE OF INCORPORATION INTO MANUAL
25-28 25-28, Rev. 1 25-146 25-0218		PRR B10569 PRR B10733 PRR B11042 PRR B12571	APR 10/82 JAN 10/83 JAN 10/84 OCT 10/84 APR 01/88 JUL 01/91 MAR 01/95

25-65-51

TR & SB RECORD

01.1

Page 1

Mar 01/95

PAGE	DATE	CODE	PAGE	DATE	CODE
25-65-51			REPAIR-GENERAL		CONT.
			604	BLANK	
TITLE PAGE			REPAIR 1-1		
1	MAR 01/95	01.1	601	MAR 01/04	01.1
2	BLANK		602	BLANK	
REVISION RECORD			REPAIR 2-1		
1	APR 01/88	01.1	601	JUL 01/02	01.1
2	BLANK		602	JUL 01/02	01.1
TR & SB RECORD			REPAIR 3-1		
1	MAR 01/95	01.1	601	JUL 01/04	01.1
2	BLANK		602	JUL 01/04	01.1
LIST OF EFFECTIVE PAGES			REPAIR 4-1		
*1	MAR 01/05	01	601	JUL 01/04	01.1
THRU LAST PAGE			602	JUL 01/04	01.1
CONTENTS			ASSEMBLY		
1	APR 01/88	01.1	*701	MAR 01/05	01.1
2	BLANK		702	MAR 01/04	01.1
INTRODUCTION			703	MAR 01/04	01.1
1	APR 01/88	01.1	704	BLANK	
2	BLANK		ILLUSTRATED PARTS LIST		
DESCRIPTION & OPERATION			1001	APR 01/88	01.1
1	APR 01/88	01.1	1002	MAR 01/04	01.1
2	BLANK		1003	MAR 01/04	01.1
DISASSEMBLY			1004	MAR 01/04	01.1
*301	MAR 01/05	01.1	*1005	MAR 01/05	01.1
302	BLANK		*1006	MAR 01/05	01.1
CHECK			*1007	MAR 01/05	01.1
501	MAR 01/04	01.1	*1008	MAR 01/05	01.1
502	BLANK		*1009	MAR 01/05	01.1
REPAIR-GENERAL			*1010	MAR 01/05	01.1
601	JUL 01/04	01.1	*1011	MAR 01/05	01.1
602	JUL 01/04	01.1	*1012	MAR 01/05	01.1
603	JUL 01/04	01.1	1013	BLANK	
			1014	MAR 01/04	01.1
			1015	MAR 01/04	01.1
			1016	MAR 01/04	01.1
			1017	MAR 01/04	01.1

* = REVISED, ADDED OR DELETED

25-65-51

EFFECTIVE PAGES
CONTINUED Page 1
01 Mar 01/05

PAGE	DATE	CODE	PAGE	DATE	CODE
ILLUSTRATED PARTS LIST		CONT.			
*1018	MAR 01/05	01.1			
1019	MAR 01/04	01.1			
1020	MAR 01/04	01.1			
1021	MAR 01/04	01.1			
1022	MAR 01/04	01.1			
1023	MAR 01/04	01.1			
1024	MAR 01/04	01.1			
1025	MAR 01/04	01.1			
1026	MAR 01/04	01.1			
1027	MAR 01/04	01.1			
1028	MAR 01/04	01.1			
1029	MAR 01/04	01.1			
1030	MAR 01/04	01.1			
*1031	MAR 01/05	01.1			
1032	MAR 01/04	01.1			
1033	MAR 01/04	01.1			
1034	MAR 01/04	01.1			

* = REVISED, ADDED OR DELETED

25-65-51

EFFECTIVE PAGES
 LAST PAGE Page 2
 01 Mar 01/05

TABLE OF CONTENTS

<u>Paragraph Title</u>	<u>Page</u>
Description and Operation.	1
Testing and Trouble Shooting (not applicable)	
Disassembly.	301
Cleaning * [1]	
Check.	501
Repair	601
Assembly	701
Fits and Clearances (not applicable)	
Special Tools (not applicable)	
Illustrated Parts List	1001

* [1] Special instructions not required. Use standard industry practices and the information contained in 20-30-03.

INTRODUCTION

The instructions in this manual provide the information necessary to perform maintenance functions ranging from simple checks and replacement to complete shop-type repair.

This manual is divided into separate sections:

- | | |
|--|------------------------------|
| 1. Title Page | 4. List of Effective Pages |
| 2. Record of Revisions | 5. Table of Contents |
| 3. Temporary Revision &
Service Bulletin Record | 6. Introduction |
| | 7. Procedures & IPL Sections |

Refer to the Table of Contents for the page location of applicable sections. An asterisked flagnote *[] in place of the page number indicates that no special instructions are provided since the function can be performed using standard industry practices.

The beginning of the REPAIR section includes a list of the separate repairs, a list of applicable standard Boeing practices, and an explanation of the True Position Dimensioning symbols used.

An explanation of the use of the Illustrated Parts List is provided in the Introduction to that section.

All weights and measurements used in the manual are in English units, unless otherwise stated. When metric equivalents are given they will be in parentheses following the English units.

Design changes, optional parts, configuration differences and Service Bulletin modifications create alternate part numbers. These are identified in the Illustrated Parts List (IPL) by adding an alphabetical character to the basic item number. The resulting item number is called an alpha-variant. Throughout the manual, IPL basic item number references also apply to alpha-variants unless otherwise indicated.

Verification

Disassembly -- Sep 10/86

Assembly -- Sep 10/86

25-65-51

INTRODUCTION

01.1

Page 1

Apr 01/88

OFF-WING ESCAPE SYSTEM PACKBOARD ASSEMBLY

DESCRIPTION AND OPERATION

1. Description

- A. The off-wing escape system packboard assembly is a rigid graphite-fiber-composite-reinforced honeycomb box with two fabric covers laced together. The larger cover is fitted with nylon loops that engage hooks, as described below.
- B. A rod running the full length of the packboard supports 13 hooks that serve as attachment points for the loops of the large cover assembly. A cam at one end of the rod engages a trigger that prevents the rod from rotating until the escape slide is needed.
- C. Two girt bars provide a means for securing an escape slide to the packboard.

2. Operation

- A. Normally the escape slide is held in place by the tightly laced packboard covers. The trigger is positioned against the rod cam, preventing rod rotation.
- B. When the escape slide is needed, rotation of the trigger clear of the cam allows the rod to turn until the loops of the large cover pull free of the hooks, and the escape slide deploys.

3. Leading Particulars (Approximate)

Width -- 16 inches
Length -- 57 inches
Height -- 28 inches
Weight -- 20 pounds

25-65-51

DESCRIPTION & OPERATION
01.1 Page 1
Apr 01/88

DISASSEMBLY

NOTE: Disassemble this component only as necessary to complete fault isolation, determine the serviceability of parts, perform required repairs, and restore the unit to serviceable condition. Refer to IPL Fig. 1 for item numbers.

1. Remove lacing (10A, 12) from packboard.
2. Remove cover assembly (70B, 75B) from hooks (125). Remove hooks (125) from rod (140, 145).
3. Remove nuts (26A), washers (17, 19, 23), doublers (32), cover (34, 37), cover retainer (28), washers (17 or 21) and screws (14).
4. Remove pins (130), rod (140, 145) and sleeves (135). Remove caps (162) and tube (163).
5. Remove nuts (180A), washers (177A), bearings (182, 183), backing plates (185), washers (175A) and screws (173A).
6. Remove screws (200A, 201A, 205B) and washers (213A, 217A). Remove screw (202A), washer (215A), bracket (190A), shim (292) and washer (211B).
7. Remove screws (300, 310A, 340, 350A), washers (305, 315, 345, 355) and plate (294, 330, 332, 365).

NOTE: Do not remove jumper assembly (294L, 325) from the plate (294, 330). The jumper assembly (294L, 325) is bonded to the plate (294, 330) to complete the resistivity check as specified in SOPM 20-11-03.

8. Remove screws (390), washers (395) and cover (400, 402).
9. Brackets (190B, 195B)
 - A. Remove nut (235A), washer (230), bearing (220A) and bolt (227).
 - B. Remove nut (247A), washer (242), trigger (250, 255), spacer (245) and screw (240A).

NOTE: Do not remove rivets (265), stop (275, 280), shim (270) or bracket (257, 260) from bracket assembly (190B, 195B) unless necessary for repair or replacement.

- C. Remove rivets (265), stop (275, 280), shim (270) and bracket (257, 260).

25-65-51

DISASSEMBLY

01.1

Page 301

Mar 01/05

CHECK

NOTE: Refer to IPL Fig. 1 for item numbers.

1. Do a visual check for any obvious damage on all visible parts according to standard industry practices. Do the magnetic particle check or penetrant check if the visual check shows possible damage on the parts listed.
 - A. Magnetic particle check, Class B, as specified in SOPM 20-20-01 -- hooks (125), cam (155), trigger (250, 255), fitting (404L).
 - B. Penetrant check as specified in SOPM 20-20-02 -- spacer (245), girt bar (385A), fitting (420A).

25-65-51

CHECK

01.1

Page 501

Mar 01/04

REPAIR – GENERAL

1. Content

A. Repair, refinish and replacement procedures are included in separate repair instructions as follows:

<u>P/N</u>	<u>NAME</u>	<u>REPAIR</u>
416T2027-29,-30	COVER ASSY	1-1
416T2027-27,-28	COVER ASSY	2-1
416T2026	PACKBOARD ASSY	3-1
- - -	MISCELLANEOUS PARTS	4-1
- - -	REFINISH	

2. Standard Practices

A. Refer to the following standard practices, as applicable, for details of procedures in individual repairs.

- 20-30-03 General Cleaning Procedures
- 20-41-01 Decoding Table for Boeing Finish Codes
- 20-41-02 Application of Chemical and Solvent Resistant Finishes
- 20-42-05 Bright Cadmium Plating
- 20-43-01 Chromic Acid Anodizing
- 20-60-04 Miscellaneous Materials
- 51-70-03 (Structural Repair Manual)-Repair of Bonded Laminates and Honeycomb Sandwich Structures (room temp. cure)
- 51-70-05 (Structural Repair Manual)-Repair of Bonded Laminates and Honeycomb Sandwich Structures (250° F cure)

3. Materials

NOTE: Equivalent substitutes can be used.

A. Adhesive

- (1) BMS 5-51 or BMS 5-80 (Ref 20-60-04)
- (2) BMS 5-90

(3) Type 54 (Ref 20-50-12)

B. Cement -- Weldwood Fast Dry (Ref 20-60-04)

C. Compound, Potting (Ref 20-60-04)

| (1) BMS 5-28, Type 7

| (2) BMS 5-28, Type 17

| (3) BMS 5-28, Type 26

| (4) BMS 5-28, Type 18, 19 or 20

D. Conditioner, Static -- Dexter 28-C-1 (Ref 20-60-04)

E. Cord -- No. 48 flat nylon, 350-pound test, V45387

F. Core, honeycomb (Ref 20-60-04)

NOTE: Specify thickness 0.25 or 0.50 inch when ordering.

| (1) BMS 8-124, Type 1, class 1, grade 5.5

| (2) BMS 8-124, Type 1, class 1, grade 8.0

| (3) BMS 8-124, Type 5, class 4, grade 5.0

G. Enamel -- BMS 10-60 gloss, color 707 gray (Ref 20-60-02)

H. Fabric

(1) CRP21629, 7.5 ounce material, teflon coated one side (Ref 20-60-04)

| (2) BMS 8-168, Type 2, class 2, style 3K-70-PW grahite/epoxy
preimpregnated fibers (Ref 20-60-04)

(3) BMS 8-219, style 120, aramid (Kevlar)/epoxy preimpregnated fibers
(Ref 20-60-04)

| (4) BMS 8-168, Type 1, class 1, grade 190, graphite tape

I. Fibers, Glass, 1/32-inch (Ref 20-60-04)

J. Film, Bondable Tedlar -- 100BG30TR (transparent) (Ref 20-60-04)

K. Film, Parting (Ref 20-60-04)

(1) Fluorinated Ethylene Propylene (FEP)

(2) Tedlar, nonbondable PVF

25-65-51

REPAIR-GENERAL

01.1

Page 602

Jul 01/04

(3) Teflon, perforated, 1/32 - 1/16-inch diameter holes spaced 1/4 - 1/2-inch

L. Film, Vacuum Bag

(1) Nylon, 2-mil minimum thickness

(2) Polyvinyl alcohol

(3) Polyethylene

| M. Hardener, Resin -- BMS 8-201, Type 1 (Epocast 9816 only)
(Ref SOPM 20-60-04)

| N. Primer -- BMS 10-11, Type 1 (Ref 20-60-02)

| O. Resin, Fiberglass -- BMS 8-201, Type 1 (Epocast 50-A only)
(Ref SOPM 20-60-04)

P. Sealant -- BMS 5-95 (Ref SOPM 20-60-04)

| Q. Thread -- V-T-295, Type 1, class 1, size E

25-65-51

REPAIR-GENERAL

01.1

Page 603

Jul 01/04

COVER ASSEMBLY – REPAIR 1-1

416T2027-29, -30

NOTE: Refer to REPAIR-GENERAL for a list of applicable standard practices.
Refer to IPL Fig. 1 for item numbers.

1. Repair of Punctures and Tears

- A. Repair punctures and tears in skirt (60A) or cover (65) with a patch of two-layer CRP21629 fabric to underside of damaged fabric.
- B. Bond patch with Weldwood cement, or sew (seven stitches per inch) in place with nylon thread. Sew the edges of the puncture or the tear to the patch.

2. Replacement of Defective Loops

- A. Carefully cut the stitches back to let you remove the bad loop (59).
- B. Cut a replacement loop from nylon cord, 5.0 inches long.
- C. Sew the loop under reinforcement strap (57) with nylon thread, approximately seven stitches to the inch, in same pattern as the old stitches.

3. Replacement of Defective Grommets

- A. Replace defective grommets (40, 45).
- B. If one metal reinforcement (50) is broken:
 - (1) Make the metal edges smooth.
 - (2) Apply two layers of CRP21629 fabric. Bond and sew (seven stitches per inch) in position. The cover can be used without a grommet.
- C. Replace cover (34 or 37) if two adjacent grommets (40 or 45) have broken metal reinforcement (50).

25-65-51

REPAIR 1-1

01.1

Page 601

Mar 01/04

COVER ASSEMBLY – REPAIR 2-1

416T2027-27, -28

NOTE: Refer to REPAIR-GENERAL for a list of applicable standard practices.
Refer to IPL Fig. 1 for item numbers.

1. Repair of Punctures and Tears

- A. Repair punctures and tears in skirt (105 or 110) or cover (115 or 120) with a two-layer patch of CRP21629 fabric to underside of damaged fabric. Bond patch with Weldwood cement, or sew (seven stitches per inch) in place with nylon thread. Sew the edges of the puncture or the tear to the patch.

2. Replacement of Defective Loops (100A)

- A. Carefully cut the stitches back along the edge seam of the cover (115 or 120) to let you remove the bad loop (100A).
- B. Cut a replacement loop from nylon cord, 13.0 inches long.
- C. Sew the loop into edge seam of cover (115 or 120), with nylon thread, approximately seven stitches to the inch (Fig. 601). Overlap the new stitches with the old (approximately 2 inches at each end) to hold the old stitches in position.

3. Replacement of Defective Loops (102)

- A. Carefully cut the stitches back to let you remove the bad loop (102).
- B. Cut a replacement loop from nylon cord, 5.0 inches long.
- C. Sew the loop under reinforcement strap (97) with nylon thread, approximately seven stitches to the inch, in the same pattern as the old stitches.

4. Replacement of Defective Grommets

- A. Replace defective grommets (80, 85).
- B. If one metal reinforcement (90) is broken:
 - (1) Make the metal edges smooth.

25-65-51

REPAIR 2-1

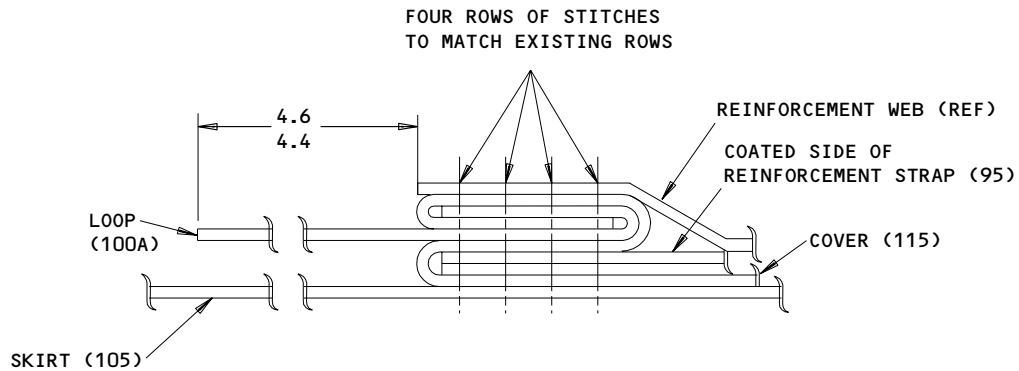
01.1

Page 601

Jul 01/02

(2) Cover with two layers of CRP21629 fabric. Bond and sew (seven stitches per inch) in position. The cover assembly can be used without the grommet.

C. Replace cover assembly (70B or 75B) if two adjacent grommets (80 or 85) have broken metal reinforcement (90).



Loop Replacement
Figure 601

T21572

25-65-51

REPAIR 2-1

01.1

Page 602

Jul 01/02

PACKBOARD ASSEMBLY – REPAIR 3-1

416T2026-19 thru -26

NOTE: Refer to REPAIR-GENERAL for a list of applicable standard practices.
Refer to IPL Fig. 1 for item numbers.

1. Skin or Core Repair

- A. Repair damage to skin plies or honeycomb core of packboard (425B or 430B) per 51-70-03 or 51-70-05 of Structural Repair Manual, and these steps.
- B. Top skin ply on each side is Kevlar prepreg, BMS 8-219, style 285 or 120. Remaining skin is seven layers of graphite impregnated epoxy prepreg, BMS 8-168, class 2, Type II, style 3-K-70-PW. Warp in each layer is at a 45 degree angle to the layer before it.
- C. Honeycomb core is nonmetallic, BMS 8-124, Type I, class 1, 0.25 or 0.50 inch thick. Straight segments are grade 8. Curved segments are grade 5.5.
- D. Hot bond with these materials and a 250-270°F cure temperature per SRM 51-70-05.
- E. Repair damage to the edge potting as specified in BAC5432. Use compound 64, BMS 5-28, Type 26.

NOTE: The edge potting is 0.50 inch in depth.

2. Packboard Refinish

- A. Fillet seal the edges with sealant, BMS 5-95.
- B. Prepare the surface (SRF-14.672) all over.
- C. Apply primer BMS 10-11, Type 1 (F-20.02) all over.
- D. Apply BMS 10-60 gloss enamel, color 707 gray (SRF-14.9813) all over.

3. Insert Replacement

- A. Replace inserts (293, 435, 440, 445, 450) as specified in BAC5583 Method B. Use BMS 5-28, Type 18, 19 or 20. Make reference marks on surrounding structure with a sharp pencil as necessary, to help put the replacement in position.

4. Grommet Replacement

- A. Remove the old grommet (455A).

25-65-51

REPAIR 3-1

01.1

Page 601

Jul 01/04

- B. Bond a replacement grommet in position with Type 54 adhesive as specified in SOPM 20-50-12.

25-65-51

REPAIR 3-1

01.1

Page 602

Jul 01/04

MISCELLANEOUS PARTS REFINISH – REPAIR 4-1

1. Repair of these parts is only replacement of the original finish. Refer to REPAIR-GENERAL for a list of applicable standard practices.

IPL FIG. & ITEM	MATERIAL	FINISH
<u>Fig. 1</u>		
Hooks (125)	17-7PH CRES, CH900	Passivate (F-17.09).
Cam (155)	17-4PH or 15-5PH CRES, 180-200 ksi or 321 CRES	Passivate (F-17.09).
Tube (160)	304 CRES	Passivate (F-17.09).
Bearings (182, 182A)	Nylon	No finish.
Bearing (183) 69B52215-3	AISI 321 or 347 or 17-4PH CRES, no heat treat	Cadmium plate (F-15.06).
Bearing (183A) 69B52215-6	AISI 321 or 347 or 17-4PH CRES, no heat treat	Passivate (F-17.09). Apply solid film lubricant BMS 3-8 (F-19.10).
Plate (185)	Al alloy	Chemical treat or chromic acid anodize (F-17.01).
Spacer (245)	321 or 347 CRES	Passivate (F-17.09).
Trigger (250,255)	17-4PH or 15-5PH CRES, 180-200 ksi	Passivate (F-17.09).
Bearing (220C,225C)	17-4PH or 15-5PH CRES, 180-200 ksi or 321 or 347 CRES	Cadmium plate per 20-42-05, Type 2, class 2 (F-15.06) all over.
Bearing (220A, 225A)	AISI 321 or 347 CRES, or 17-4PH or 15-5PH CRES 180-200 ksi	Passivate (F-17.09). Apply solid film lubricant BMS 3-8 (F-19.10).

Refinish Details
Figure 601 (Sheet 1)

25-65-51

REPAIR 4-1

01.1

Page 601

Jul 01/04

IPL FIG. & ITEM	MATERIAL	FINISH
<u>Fig. 1</u> (Cont)		
Bracket (285A, 290A)	304 CRES	Passivate (F-17.09).
Plates (330,365) and Fitting (420A)	Al alloy	Chemical treat or chromic acid anodize and apply primer, BMS 10-11, Type 1 (F-18.05) all over.
Girt Bar (385A)	Al alloy	Chromic acid anodize and apply primer, BMS 10-11, Type 1 (F-18.13) all over.
Fittings (404L)	15-5PH CRES 180-200 ksi	Passivate (F-17.09).

Refinish Details
 Figure 601 (Sheet 2)

25-65-51

REPAIR 4-1

01.1

Page 602

Jul 01/04

ASSEMBLY

1. Materials

NOTE: Equivalent substitutes can be used.

- A. Adhesive -- Type 38 (Ref 20-50-12)
- B. Primer -- BMS 10-11, Type 1 (Ref 20-60-02)

2. Assembly (IPL Fig. 1)

A. Brackets (190B or 195B)

- (1) Insert screw (240A) through bracket (257 or 260), spacer (245), trigger (250 or 255), stop (275 or 280), bracket (285A or 290A) and washer (242). Install nut (247A).
- (2) Insert shim (270) between stop (275 or 280) and bracket (257 or 260). Remove laminations from shim (270) as necessary to meet noted dimensions (Fig. 701). Install rivets (265).
- (3) Insert bolt (227) through bracket (285A or 290A), bearing (220) and washer (230). Install nut (235).

B. Fitting assemblies (403 thru 403W, 405A)

- (1) If fittings (403 thru 403W) are used, use a maximum of two shims (422D, 423A) at each fastener. Delaminate shims as required to allow no more than 0.030-inch protrusion, or 0.0010-inch recess, of fitting from surface of packboard (425B or 430B). After shim thickness is determined, drill 0.190-0.199 hole at center of shims and apply a coat of BMS 10-11, Type 1 primer to shim before installation.
- (2) If fitting assemblies (405A) are used, drill 0.342-0.354-inch diameter hole at center of shim (422A, 423A). Remove laminations or add shims as required to make flush with packboard (425B or 430B) within 0.007 inch. Bond shim (422A, 423A) to fitting assemblies (403, 403G, 403L, 403R, 405A) per 20-50-12, type 38. After delamination, finish shim by applying BMS 10-11, Type 1 primer all over, except omit primer from bonded area.

- C. Trim covers (400 or 402) as needed to match fittings (403 thru 403W, 405A). Install screws (390) through washers (395), covers and fittings.

25-65-51

ASSEMBLY
Page 701
Mar 01/05

01.1

- D. Install screws (300, 310A, 340, 350A) through washers (305, 315, 345, 355) and plate (295A, 335A) into packboard (425B or 430B).

NOTE: Clean the washers (315, 355) and the underside of screwhead (310A, 350A) as specified in SOPM 20-11-03.

- (1) Install screws (200A, 201A, 205B) thru washers (213A, 217A) and bracket (190B) into inserts (293). Install screw (202A) through washer (215A), bracket (190B or 195B), shim (292A) and washer (211B) into insert (293).
- (2) Slide tube (163) through bearings (182). Install caps (162) on tube (163). Install screws (173A) through washers (175A), bearings (182, 183), backing plates (185), packboard (425B or 430B), and washers (177A). Install nuts (180B).
- (3) Install cam (155) on tube (160) with rivets (150). Slide tube (160) through bearings (182 or 183) and sleeves (135).
- (4) Center cam (155) on trigger (250, 255). Locate sleeves (135) on tube (160) to permit maximum 0.03 inch end play of rod (140, 145). Drill 0.094-0.097-inch diameter holes through tube (160) and install pins (130).
- (5) Add shim under bracket (190B or 195B) as necessary to ensure that rod (140, 145) and trigger (250, 255) rotates freely with a torque not exceeding 6 lb-in.
- (6) Insert screws (14) through washers (19 or 21), cover retainer (28), cover (34, 37), packboard (425B or 430B), doubler (32) and washers (17, 19, 21). Install nuts (26A).

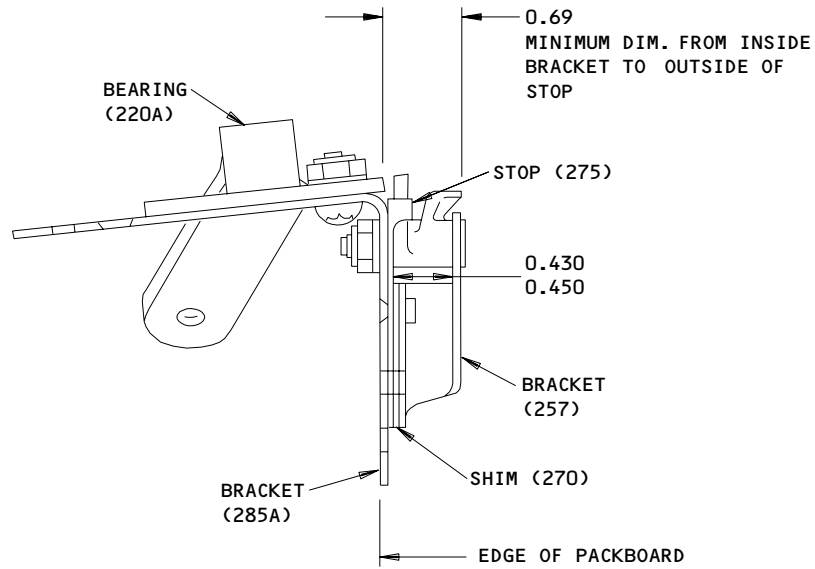
NOTE: You can add washers (21 or 23) between the cover (34, 37) and the packboard (425B or 430B) to prevent a clearance between the cover (34, 37) and the insert of the packboard (425B or 430B).

- (7) Install hooks (125) into rod (140, 145). Install cover assembly (70B or 75B) onto hooks (125).
- (8) Insert lacing (12) through 16 pair of grommets. Insert lacing (10A) through 11 pair of grommets. Lacing ends terminate at end grommets.

25-65-51

ASSEMBLY
Page 702
Mar 01/04

01.1



ALL DIMENSIONS ARE IN INCHES

Bracket Shimming Requirements
Figure 701

25-65-51

ASSEMBLY
Page 703
Mar 01/04

01.1

ILLUSTRATED PARTS LIST

1. This section lists and illustrates replaceable or repairable component parts. The Illustrated Parts Catalog contains a complete explanation of the Boeing part numbering system.

2. Indentures show parts relationships as follows:

Assembly

Detail Parts for Assembly

Subassembly

Attaching Parts for Subassembly

Detail Parts for Subassembly

Detail Installation Parts (Included only if installation parts may be returned to shop as part of assembly)

3. One use code letter (A, B, C, etc.) is assigned in the EFF CODE column for each variation of top assembly. All listed parts are used on all top assemblies except when limitations are shown by use code letter opposite individual part entries.

4. Letter suffixes (alpha-variants) are added to item numbers for optional parts, Service Bulletin modification parts, configuration differences (except left- and right-hand parts), product improvement parts, and parts added between two sequential item numbers. The alpha-variant is not shown on illustrations when appearance and location of all variants of the part is the same.

5. Service Bulletin modifications are shown by the notations PRE SB XXXX and POST SB XXXX.

A. When a new top assembly part number is assigned by Service Bulletin, the notations appear at the top assembly level only. The configuration differences at detail part level are then shown by use code letter.

B. When the top assembly part number is not changed by the Service Bulletin, the notations appear at the detail part level.

6. Parts Interchangeability

Optional
(OPT)

The parts are optional to and interchangeable with other parts having the same item number.

Supersedes, Superseded By
(SUPSDS, SUPSD BY)

The part supersedes and is not interchangeable with the original part.

Replaces, Replaced By
(REPLS, REPLD BY)

The part replaces and is interchangeable with, or is an alternate to, the original part.

25-65-51

VENDORS

1FF12 CIRCUIT SYSTEMS CO
 2621 COLORADO CIR PO BOX 171322
 ARLINGTON, TEXAS 76017

1GK47 R AND B ELECTRONICS INC
 2374 NW DALLAS STREET
 GRAND PRAIRIE, TEXAS 75050

11815 CHERRY AEROSPACE FASTENERS DIV OF TEXTRON
 1224 EAST WARNER AVENUE PO BOX 2157
 SANTA ANA, CALIFORNIA 92707-0157
 FORMERLY IN LOS ANGELES, CALIF , FORMERLY CHERRY FASTENERS
 TOWNSEND DIV OF TEXTRON INC V71087

15653 FAIRCHILD FASTENERS KAYNAR PRODUCTS DIV
 800 S STATE COLLEGE BLVD
 FULLERTON, CALIFORNIA 92831-3001
 FORMERLY VK6405 MICRODOT AEROSP LTD; FORMERLY KAYNAR TECH
 KAYNAR DIV

27238 BRISTOL INDUSTRIES
 630 EAST LAMBERT ROAD PO BOX 630
 BREA, CALIFORNIA 92621-4119

34669 ALLIANCE PLASTICS INC
 3123 STATION ROAD
 ERIE, PENNSYLVANIA 16510-3045

52828 REPUBLIC FASTENER MFG CORP
 1300 RANCHO CONEJO BLVD
 NEWBURY PARK, CALIFORNIA 91320-1405
 FORMERLY IN SYLMAR, CALIFORNIA

25-65-51

VENDORS

56878 SPS TECHNOLOGIES INC AEROSPACE AND INDUSTRIAL PRODUCTS DIV
HIGHLAND AVENUE
JENKINTOWN, PENNSYLVANIA 19046
FORMERLY STANDARD PRESSED STEEL

62554 SIMMONDS MECAERO FASTENERS INC
1734 SEQUOIA AVENUE
ORANGE, CALIFORNIA 92668

71087 BOOTS ACFT NUT DIV TOWNSEND CO SEE TEXTRON INC CHERRY
FASTENER TOWNSEND DIV V11815

72962 HARVARD INDUSTRIES INC
3 WERNER WAY SUITE 210
LEBANON, NEW JERSEY 08833
FORMERLY AMERACE CORP ESNA DIV
FORMERLY ELASTIC STOP NUT IN UNION, NJ

80539 SPS TECHNOLOGIES INC AEROSPACE PRODUCTS DIV
2701 SOUTH HARBOR BOULEVARD PO BOX 1259
SANTA ANA, CALIFORNIA 92702-1259
FORMERLY NUTT-SHEL DIV OF SPC WESTERN CO V80539
AND STANDARD PRESSED STEEL WESTERN DIV V17279

91812 JANCO CORPORATION
3111 WINONA AVENUE, PO BOX 3038
BURBANK, CALIFORNIA 91504-2543

92215 FAIRCHILD IND INC FAIRCHILD AEROSPACE FASTENER DIV
3010 W LOMITA BLVD
TORRANCE, CALIFORNIA 90505-5102
FORMERLY VOI-SHAN IN CULVER CITY, CALIF

25-65-51

ILLUSTRATED PARTS LIST
01.1 Page 1003
Mar 01/04

VENDORS

97393 SHUR-LOK CORPORATION
2541 WHITE ROAD PO BOX 19584
IRVINE, CALIFORNIA 92713
FORMERLY SHUR LOK CORP VB0060
FORMERLY IN SANTA ANA, CALIFORNIA 92714

25-65-51

ILLUSTRATED PARTS LIST
01.1 Page 1004
Mar 01/04

PART NUMBER	AIRLINE PART NO.	FIG.	ITEM	TTL REQ
AN960-10		1	19	14
		1	31	
		1	175	
		1	217	
		1	211A	
AN960-10L		1	17	14
		1	30	
		1	137	
		1	177	
		1	211	
		1	213	
AN960-516L		1	315	1
		1	355	1
		1	315A	1
		1	355A	3
AN960C416		1	21	AR
AN960C416L		1	23	AR
AN960PD10		1	215	
		1	305	2
		1	345	6
BACB30LH3SU9		1	240A	1
BACB30LH3U1		1	136A	
		1	201A	1
BACB30LK3U13		1	170A	2
BACB30LK3U16		1	173A	12
BACB30LK3U2		1	227	1
		1	200A	1
BACB30LK3U3		1	202A	1
BACB30LU3-9		1	240	
		1	240B	1
BACG20ZS1321B		1	455A	1
BACG20Z51321B		1	455	
BACJ40AB27-12		1	325	1
		1	294L	1
BACN10JC3C		1	235B	1
		1	247B	1
BACN10JN4		1	404G	1
		1	410A	1
BACN10JN5		1	375	2
BACN10R10L		1	180B	14
		1	180D	14
BACN10YR3		1	26A	14
BACN10YR3C		1	235A	1
		1	247A	1
BACN107R3		1	180C	14
BACR15BA3AD		1	404	2

25-65-51

ILLUSTRATED PARTS LIST
01.1 Page 1005
Mar 01/05

PART NUMBER	AIRLINE PART NO.	FIG.	ITEM	TTL REQ
BACR15BA3D		1	415	
		1	415A	2
BACR15BA4D		1	380	4
BACS12CK3U4		1	205A	
BACS12CK3U5		1	136B	1
		1	205B	2
BACS4OR08B08F		1	423	
		1	422D	AR
		1	422G	
		1	423A	18
BACS4OR08D08		1	422	
		1	422A	AR
BACS4OR08W08		1	292	
		1	292A	AR
BACW10P3C		1	230	1
		1	242	1
BACW10UC10P		1	395	18
BH00312-3		1	26A	14
BRFM20A5		1	375	2
BRH10-3		1	35	
BRH10C3		1	235	
		1	247	
		1	235B	1
		1	247B	1
BRH30C3		1	26A	14
D1-2		1	162	2
F22K1-02		1	180B	14
		1	180D	14
H10-3BAC		1	26	
		1	180	
H52732-3		1	26A	14
		1	180A	
		1	180C	14
H52732-3C		1	235A	1
		1	247A	1
LH3858-3		1	26A	14
MF1000-4BAC		1	404G	1
MF1300-5BAC		1	375	2
MS16562-215		1	130	2
MS16562-6		1	320	1
		1	360	1
		1	320A	1
MS20230GB10		1	40	41
		1	80	27
MS20230WB10		1	45	41
		1	85	27
MS20427M4		1	265	2

25-65-51

 ILLUSTRATED PARTS LIST
 01.1 Page 1006
 Mar 01/05

PART NUMBER	AIRLINE PART NO.	FIG.	ITEM	TTL REQ
MS20613-4C12		1	150	2
MS21919WDG20		1	138	1
MS25083-2CD12		1	325A	1
NAS1149C0332R		1	137A	
		1	177A	14
		1	211B	AR
		1	213A	1
		1	217A	1
NAS1149C0363R		1	137B	1
		1	175A	14
		1	211C	AR
		1	215A	3
NAS1149GN532P		1	302	
		1	342	
		1	293Q	1
		1	331Q	6
NAS1149G0532P		1	302A	
		1	315B	1
		1	342A	
		1	355B	3
NAS1801-5-17		1	293M	1
		1	297A	
		1	310C	1
		1	331M	6
		1	339A	
		1	350C	3
NAS1801-5-9		1	297	
		1	339	
NAS1834C3-290		1	435	14
NAS1834C3-580		1	450	14
NAS1834C4K312		1	440	2
NAS514P1032		1	390H	18
NAS514P1032-4P		1	210	
NAS514P1032-5P		1	390	18
NAS514P1032-6P		1	390G	
NAS603-4P		1	205	
NAS623-3-1		1	136	
		1	201	
		1	300	2
		1	340	6
NAS623-3-11		1	14	14
NAS623-3-13		1	170	
NAS623-3-16		1	173	
NAS623-3-2		1	200	
		1	341	
		1	300A	
NAS623-3-3		1	202	

25-65-51

ILLUSTRATED PARTS LIST
01.1 Page 1007
Mar 01/05

PART NUMBER	AIRLINE PART NO.	FIG.	ITEM	TTL REQ
NAS623-3-8		1	25	
NS103218-048		1	404G	1
NS103218-054		1	375	2
PLH53		1	26A	14
PLH53C		1	235A	1
		1	247A	1
RBEJ40AB27-12		1	325	1
		1	294L	1
RMF9201M4		1	404G	1
RMF9201M5		1	375	2
SL618-3C		1	293	5
		1	445	26
T6113C1032		1	26A	14
T8124S4S		1	410	
		1	404G	1
		1	410A	1
T8124S5S		1	375	2
		1	375	2
VN252A048		1	404G	1
		1	404G	1
VN252A054		1	375	2
100227-12		1	325	1
		1	294L	1
22K1-02		1	180B	14
		1	180D	14
26CL02		1	180B	14
		1	180D	14
416T2005-1		1	1	
416T2005-10		1	5B	RF
416T2005-11		1	10A	1
416T2005-12		1	12	1
416T2005-13		1	1C	RF
416T2005-14		1	5C	RF
416T2005-15		1	402	9
		1	400G	
		1	400H	9
416T2005-17		1	1E	RF
416T2005-18		1	5E	RF
416T2005-19		1	1F	RF
416T2005-2		1	5	
416T2005-20		1	5F	RF
416T2005-21		1	1G	RF
416T2005-22		1	5G	RF
416T2005-23		1	331J	3
416T2005-24		1	293J	1
416T2005-3		1	400	9
416T2005-4		1	10	

25-65-51

 ILLUSTRATED PARTS LIST
 01.1 Page 1008
 Mar 01/05

PART NUMBER	AIRLINE PART NO.	FIG.	ITEM	TTL REQ
416T2005-7		1	1A	
416T2005-8		1	5A	
416T2005-9		1	1B	RF
416T2013-1		1	370	2
416T2013-2		1	385	
416T2013-3		1	385A	1
416T2026-1		1	425	
416T2026-17		1	425A	
416T2026-18		1	430A	
416T2026-19		1	425B	1
416T2026-2		1	430	
416T2026-20		1	430B	1
416T2026-21		1	425C	1
416T2026-22		1	430C	1
416T2026-23		1	425D	1
416T2026-24		1	430D	1
416T2026-25		1	425E	1
		1	425F	1
416T2026-26		1	430E	1
		1	430F	1
416T2027-1		1	70	
416T2027-10		1	120	1
416T2027-11		1	65	1
416T2027-12		1	100	
416T2027-13		1	50	2
		1	90	1
416T2027-14		1	57	3
		1	97	2
416T2027-15		1	59	3
		1	102	2
416T2027-16		1	60A	1
416T2027-17		1	70A	
416T2027-18		1	75A	
416T2027-19		1	15A	
416T2027-2		1	75	
416T2027-20		1	20A	
416T2027-21		1	122	1
416T2027-22		1	123	1
416T2027-23		1	124	1
416T2027-24		1	121	1
416T2027-25		1	121A	1
416T2027-27		1	70B	1
416T2027-28		1	75B	1
416T2027-29		1	34	1
416T2027-3		1	15	
416T2027-30		1	37	1
416T2027-32		1	92	2

25-65-51

ILLUSTRATED PARTS LIST
01.1 Page 1009
Mar 01/05

PART NUMBER	AIRLINE PART NO.	FIG.	ITEM	TTL REQ
416T2027-33		1	93	2
416T2027-34		1	100A	13
416T2027-36		1	92A	2
416T2027-37		1	93A	2
416T2027-38		1	121B	1
416T2027-39		1	121C	1
416T2027-4		1	20	
416T2027-40		1	91	1
416T2027-41		1	91A	1
416T2027-5		1	105	1
416T2027-6		1	110	1
416T2027-7		1	60	
416T2027-8		1	55	12
		1	95	13
416T2027-9		1	115	1
416T2029-1		1	140	1
416T2029-2		1	145	1
416T2029-3		1	160	1
416T2029-5		1	140A	1
416T2029-6		1	145A	1
416T2319-1		1	28	1
416T2319-2		1	29	1
416T2319-3		1	32	1
416T2319-4		1	163	1
416T2320-1		1	387	2
416T2808-1		1	403	4
		1	403C	
		1	403M	1
416T2808-2		1	403A	4
		1	403G	2
		1	403J	
		1	403K	2
		1	403S	2
416T2808-3		1	403B	4
		1	403L	1
		1	403P	
		1	403T	2
416T2808-4		1	403R	2
		1	403U	
		1	403W	2
416T2808-5		1	404L	1
		1	404M	1
416T2808-6		1	404N	1
		1	404P	1
		1	404Q	
		1	404S	1

25-65-51

 ILLUSTRATED PARTS LIST
 01.1 Page 1010
 Mar 01/05

PART NUMBER	AIRLINE PART NO.	FIG.	ITEM	TTL REQ
416T2808-7		1	404R	1
		1	404T	1
		1	404V	1
416T2808-8		1	404X	1
		1	404Y	1
		1	404Z	
		1	1D	RF
416T2828-1		1	5D	RF
65B52466-1		1	405	
65B52466-2		1	405A	9
		1	420	
		1	420A	1
69B51402-1		1	310	
69B51402-2		1	350	
		1	310A	1
		1	310B	1
69B52046-2		1	350A	1
		1	350B	3
		1	245	1
69B52047-3		1	275	1
69B52047-4		1	280	1
69B52058-1		1	335	
69B52058-2		1	295	
69B52058-3		1	335A	3
		1	335B	3
		1	295A	1
69B52058-4		1	295B	1
		1	294	1
		1	330	1
69B52062-1		1	332	3
		1	365	1
		1	165	
69B52215-1		1	182	12
69B52215-3		1	167	
		1	183	1
		1	182A	12
69B52215-5		1	183A	1
69B52215-6		1	285	
69B52815-5		1	290	
69B52815-6		1	285A	1
69B52815-7		1	290A	1
69B52815-8		1	155	1
69B52817-4		1	155A	1
69B52817-5		1	250	1
69B52818-5		1	255	1
69B52818-6		1	125	13
69B52819-1		1	195B	1
69B52820-10		1		

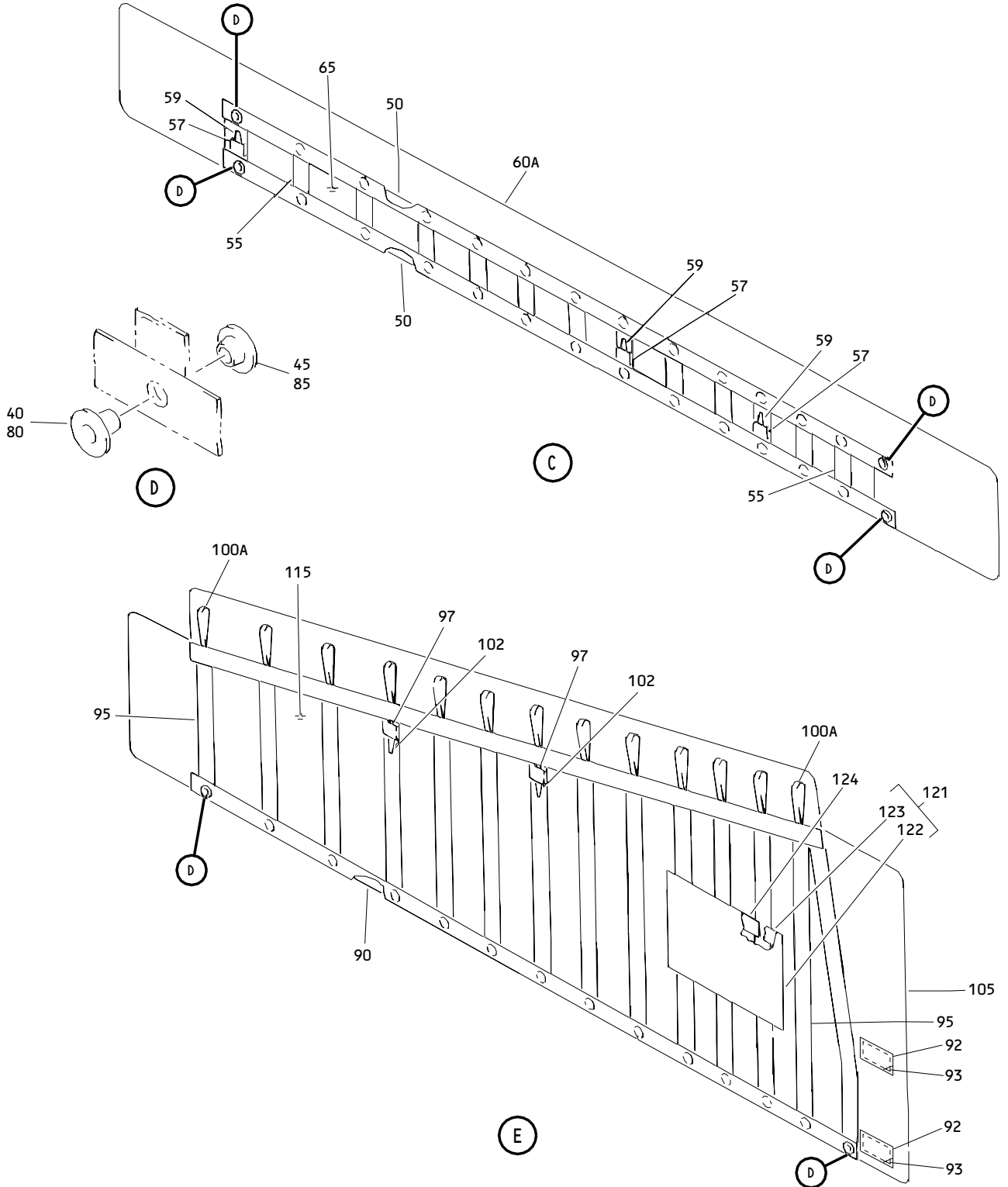
25-65-51

ILLUSTRATED PARTS LIST
01.1 Page 1011
Mar 01/05

PART NUMBER	AIRLINE PART NO.	FIG.	ITEM	TTL REQ
69B52820-5		1	190	
69B52820-6		1	195	
69B52820-7		1	190A	
		1	190C	1
69B52820-8		1	195A	
		1	195C	1
69B52820-9		1	190B	1
69B52834-1		1	135	2
69B53574-1		1	185	14
69B53599-1		1	220	
		1	220C	1
69B53599-2		1	225	
		1	225C	1
69B53599-3		1	220A	1
69B53599-4		1	225A	1
69B53599-5		1	220B	1
69B53599-6		1	225B	1
69B58740-3		1	257	1
69B58740-4		1	260	1
69B58740-5		1	270	1
80724-1032		1	26A	14
		1	26A	14
940CW27-12		1	325	1
		1	294L	1

25-65-51

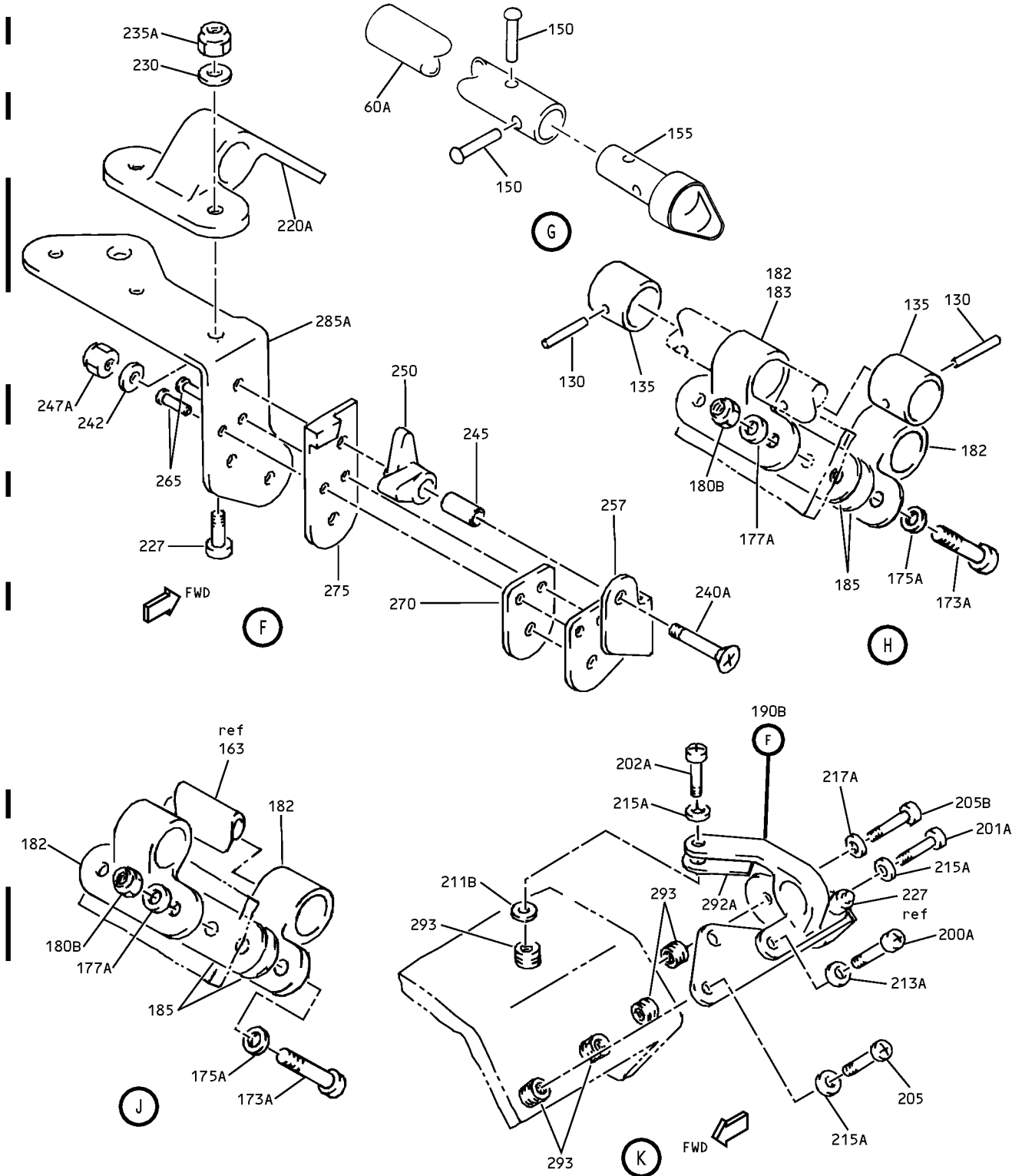
 ILLUSTRATED PARTS LIST
 01.1 Page 1012
 Mar 01/05



Off-Wing Escape System Packboard Assembly
Figure 1 (Sheet 2)

25-65-51

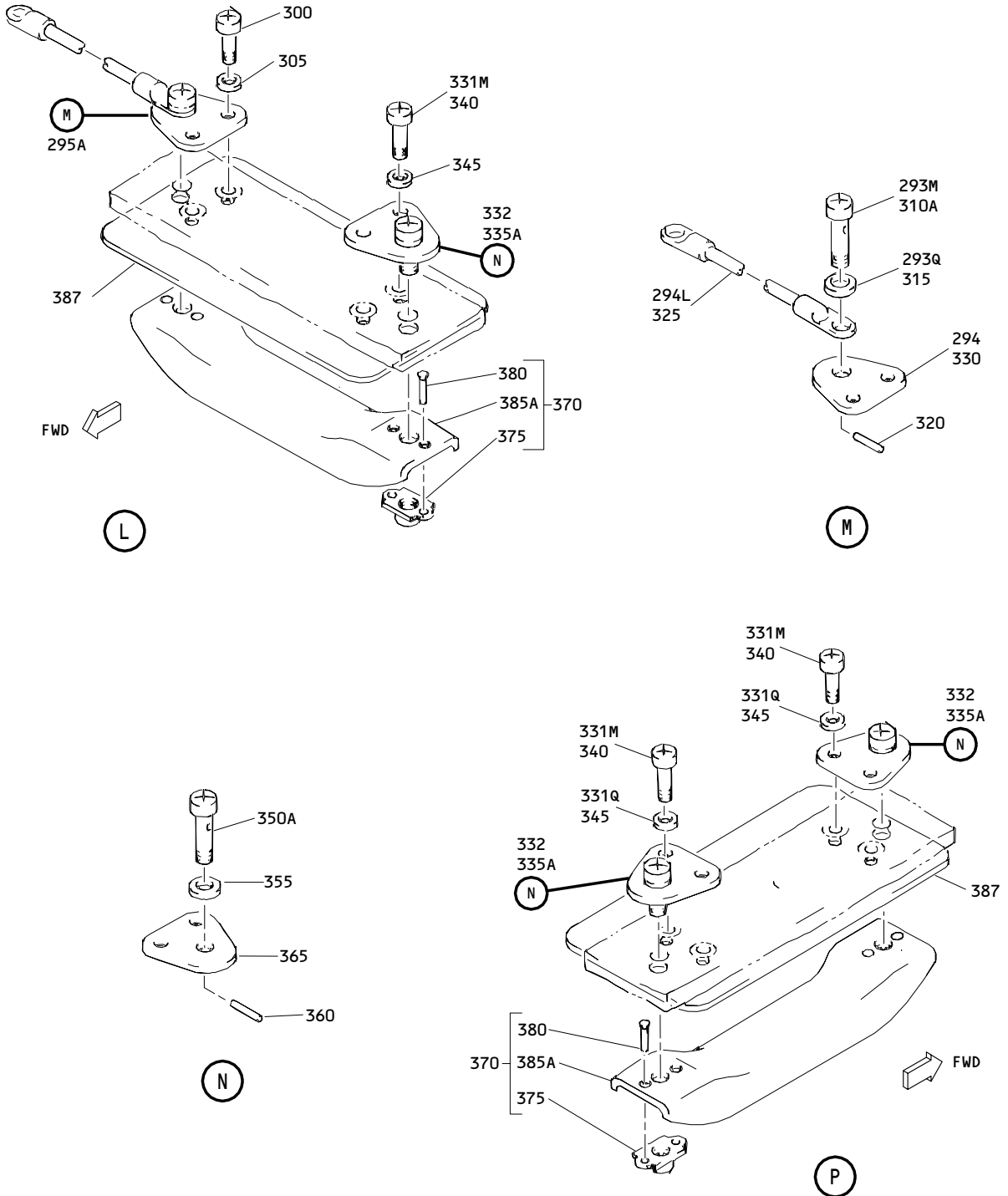
ILLUSTRATED PARTS LIST
01.1 Page 1015
Mar 01/04



Off-Wing Escape System Packboard Assembly
 Figure 1 (Sheet 3)

25-65-51

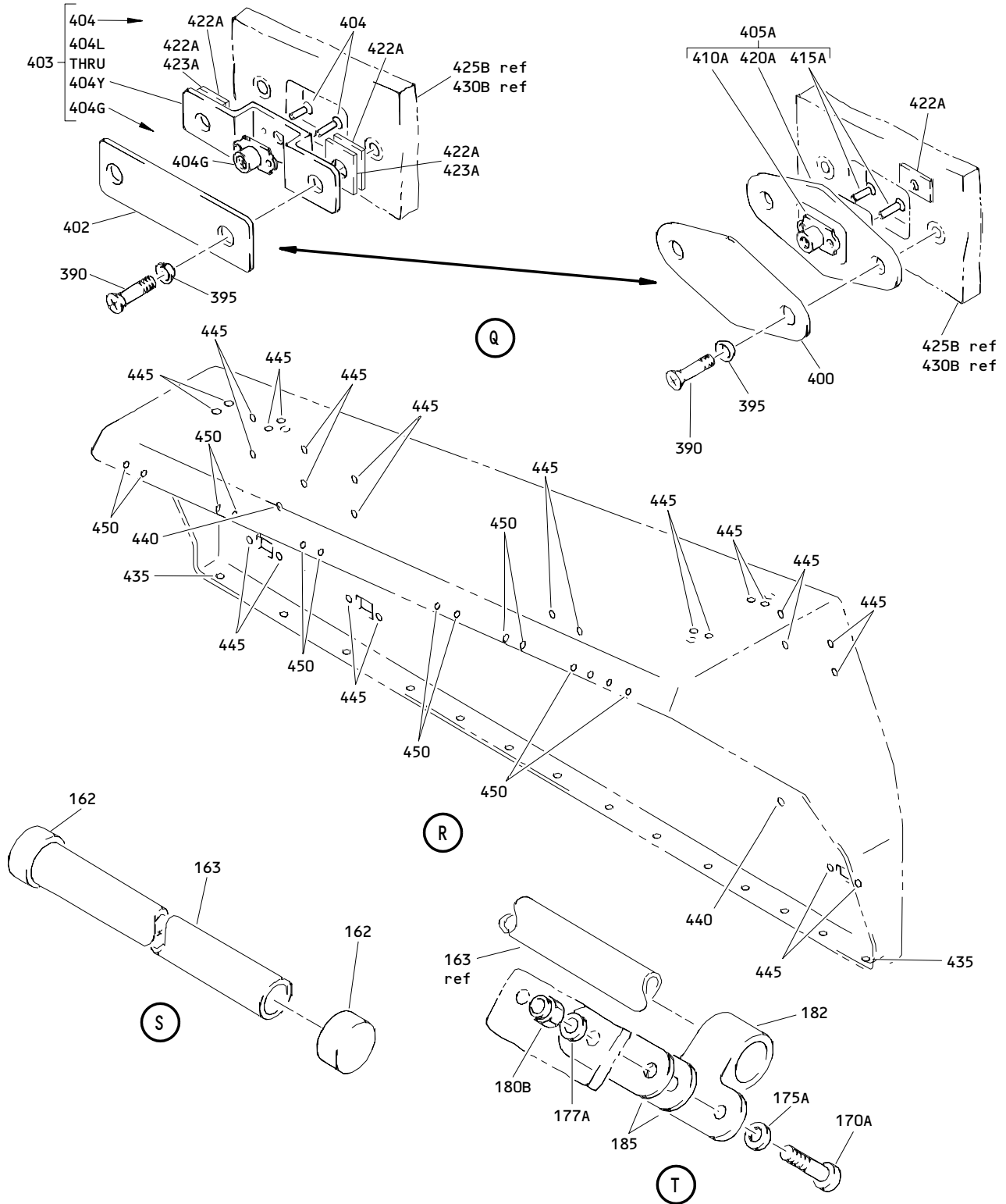
ILLUSTRATED PARTS LIST
 01.1 Page 1016
 Mar 01/04



Off-Wing Escape System Packboard Assembly
Figure 1 (Sheet 4)

25-65-51

ILLUSTRATED PARTS LIST
01.1 Page 1017
Mar 01/04



Off-Wing Escape System Packboard Assembly
 Figure 1 (Sheet 5)

25-65-51

ILLUSTRATED PARTS LIST
 01.1 Page 1018
 Mar 01/05

BOEING
COMPONENT
MAINTENANCE MANUAL

FIG. & ITEM	PART NO.	AIRLINE PART NUMBER	NOMENCLATURE 1234567	EFF CODE	QTY PER ASSY
01-					
-1	416T2005-1		DELETED		
-1A	416T2005-7		DELETED		
R -1B	416T2005-9		PACKBOARD ASSY-OFF-WING ESCAPE SYS (LH)	A	RF
R -1C	416T2005-13		PACKBOARD ASSY-OFF-WING ESCAPE SYS (LH)	C	RF
R -1D	416T2828-1		PACKBOARD ASSY-OFF-WING ESCAPE SYS (REWORK) (LH)	E	RF
R -1E	416T2005-17		PACKBOARD ASSY-OFF-WING ESCAPE SYS (LH)	G	RF
-1F	416T2005-19		PACKBOARD ASSY-OFF-WING ESCAPE SYS (LH)	J	RF
R -1G	416T2005-21		PACKBOARD ASSY-OFF-WING ESCAPE SYS (LH) (POST SB 25-0218)	L	RF
-5	416T2005-2		DELETED		
-5A	416T2005-8		DELETED		
R -5B	416T2005-10		PACKBOARD ASSY-OFF-WING ESCAPE SYS (RH)	B	RF
R -5C	416T2005-14		PACKBOARD ASSY-OFF-WING ESCAPE SYS (RH)	D	RF
R -5D	416T2828-2		PACKBOARD ASSY-OFF-WING ESCAPE SYS (REWORK) (RH)	F	RF
R -5E	416T2005-18		PACKBOARD ASSY-OFF-WING ESCAPE SYS (RH)	H	RF
-5F	416T2005-20		PACKBOARD ASSY-OFF-WING ESCAPE SYS (RH)	K	RF
R -5G	416T2005-22		PACKBOARD ASSY-OFF-WING ESCAPE SYS (RH) (POST SB 25-0218)	M	RF
10	416T2005-4		DELETED		
10A	416T2005-11		.LACING		1
R 12	416T2005-12		.LACING		1
14	NAS623-3-11		.SCREW		14
15	416T2027-3		DELETED		
15A	416T2027-19		DELETED		
R 17	AN960-10L		.WASHER		14
R 19	AN960-10		.WASHER		14
-20	416T2027-4		DELETED		
-20A	416T2027-20		DELETED		
R 21	AN960C416		.WASHER- (OPT ITEM 23)	A,C,E ,G	AR
-23	AN960C416L		.WASHER- (OPT ITEM 21) ATTACHING PARTS	A,C,E ,G	AR

25-65-51

FIG. & ITEM	PART NO.	AIRLINE PART NUMBER	NOMENCLATURE 1234567	EFF CODE	QTY PER ASSY
01- 25 26 26A	NAS623-3-8 H10-3BAC H52732-3		DELETED DELETED .NUT- (V15653) (SPEC BACN10YR3) (OPT PLH53 (V62554)) (OPT 80724-1032 (V56878)) (OPT 80724-1032 (V52828)) (OPT T6113C1032 (V11815)) (OPT LH3858-3 (V72962)) (OPT BRH30C3 (V52828)) (OPT BH00312-3 (V27238))		14
28	416T2319-1		.RETAINER-COVER	A,C, E,G, J,L	1
-29	416T2319-2		.RETAINER-COVER	B,D, F,H, L,M	1
30 31 32 34	AN960-10L AN960-10 416T2319-3 416T2027-29		DELETED DELETED .DOUBLER .COVER ASSY	A,C,E G,J, L	1 1

25-65-51

 ILLUSTRATED PARTS LIST
 01.1 Page 1020
 Mar 01/04

BOEING
COMPONENT
MAINTENANCE MANUAL

FIG. & ITEM	PART NO.	AIRLINE PART NUMBER	NOMENCLATURE 1234567	EFF CODE	QTY PER ASSY
01-35	BRH10-3		DELETED		
-37	416T2027-30		.COVER ASSY	B,D,F ,H,K, M	1
40	MS20230GB10		..GROMMET		41
45	MS20230WB10		..GROMMET		41
50	416T2027-13		..SUPPORT-GROMMET		2
55	416T2027-8		..STRAP-REINFORCEMENT		12
57	416T2027-14		..STRAP-REINFORCEMENT		3
59	416T2027-15		..LOOP		3
60	416T2027-7		DELETED		
60A	416T2027-16		..SKIRT		1
65	416T2027-11		..COVER		1
70	416T2027-1		DELETED		
70A	416T2027-17		DELETED		
70B	416T2027-27		.COVER ASSY	A,C,E ,G,J, L	1
-75	416T2027-2		DELETED		
-75A	416T2027-18		DELETED		
-75B	416T2027-28		.COVER ASSY	B,D,F ,H,K, M	1
80	MS20230GB10		..GROMMET		27
85	MS20230WB10		..GROMMET		27
90	416T2027-13		..SUPPORT-GROMMET		1
R -91	416T2027-40		..SUB KIT ASSY- (OPT ITEM 91A)		1
R -91A	416T2027-41		..SUB KIT ASSY- (OPT ITEM 91)		1
R 92	416T2027-32		...COVER-STAY (USED ON ITEM 91)		2
R -92A	416T2027-36		...COVER-STAY (USED ON ITEM 91A)		2

25-65-51

FIG. & ITEM	PART NO.	AIRLINE PART NUMBER	NOMENCLATURE 1234567	EFF CODE	QTY PER ASSY
R 01-93	416T2027-33		...STAY- (USED ON ITEM 91)		2
R -93A	416T2027-37		...STAY- (USED ON ITEM 91A) 81205 416T2027-41		2
95	416T2027-8		..STRAP-REINFORCEMENT		13
97	416T2027-14		..STRAP-REINFORCEMENT		2
100	416T2027-12		DELETED		
100A	416T2027-34		..LOOP		13
102	416T2027-15		..LOOP		2
105	416T2027-5		..SKIRT	A,C,E ,G,J, L	1
-110	416T2027-6		..SKIRT	B,D,F ,H,K, M	1
115	416T2027-9		..COVER	A,C,E ,G,J, L	1
-120	416T2027-10		..COVER	B,D,F ,H,K, M	1
121	416T2027-24		..POCKET ASSY-(LH SIDE) (OPT ITEM 121B)	A,C,E ,G,J, L	1
-121A	416T2027-25		..POCKET ASSY-(RH SIDE) (OPT ITEM 121C)	B,D,F ,H,K, M	1
-121B	416T2027-38		..POCKET ASSY-(LH SIDE) (OPT ITEM 121)	A,C,E ,G,J, L	1
-121C	416T2027-39		..POCKET ASSY-(RH SIDE) (OPT ITEM 121A)	B,D,F ,H,K, M	1

25-65-51

 ILLUSTRATED PARTS LIST
 01.1 Page 1022
 Mar 01/04

BOEING
COMPONENT
MAINTENANCE MANUAL

FIG. & ITEM	PART NO.	AIRLINE PART NUMBER	NOMENCLATURE 1234567	EFF CODE	QTY PER ASSY
01-					
122	416T2027-21		...POCKET		1
123	416T2027-22		...HOOK-VELCRO		1
124	416T2027-23		..PILE-VELCRO		1
125	69B52819-1		.HOOK		13
130	MS16562-215		.PIN-SPR		2
135	69B52834-1		.SLEEVE		2
136	NAS623-3-1		DELETED		
136A	BACB30LH3U1		DELETED		
R 136B	BACS12CK3U5		.BOLT	G-M	1
137	AN960-10L		DELETED		
137A	NAS1149C0332R		DELETED		
R 137B	NAS1149C0363R		.WASHER	G-M	1
138	MS21919WDG20		.CLAMP	G-M	1
R 140	416T2029-1		.ROD ASSY-COVER RELEASE	A,C,E G	1
R -140A	416T2029-5		.ROD ASSY-COVER RELEASE	J,L	1
R -145	416T2029-2		.ROD ASSY-COVER RELEASE	B,D,F H	1
-145A	416T2029-6		.ROD ASSY-COVER RELEASE	K,M	1
150	MS20613-4C12		..RIVET		2
R 155	69B52817-4		..CAM (USED ON ITEMS 140,145)		1
R -155A	69B52817-5		..CAM (USED ON ITEMS 140A, 145A)		1
160	416T2029-3		..TUBE		1
162	D1-2		.CAP (V34669)		2
163	416T2319-4		.TUBE		1
165	69B52215-1		DELETED		
167	69B52215-3		DELETED		
170	NAS623-3-13		DELETED		
170A	BACB30LK3U13		.BOLT		2
173	NAS623-3-16		DELETED		
173A	BACB30LK3U16		.BOLT		12
175	AN960-10		DELETED		
175A	NAS1149C0363R		.WASHER		14
177	AN960-10L		DELETED		
177A	NAS1149C0332R		.WASHER		14
180	H10-3BAC		DELETED		
180A	H52732-3		DELETED		

25-65-51

ILLUSTRATED PARTS LIST
01.1 Page 1023
Mar 01/04

FIG. & ITEM	PART NO.	AIRLINE PART NUMBER	NOMENCLATURE 1234567	EFF CODE	QTY PER ASSY
R 01-180B	F22K1-02		.NUT (V72962) (SPEC BACN10R10L) (OPT 22K1-02 (V72962)) (OPT 26CL02 (V80539))	K,L	14
180C	H52732-3		.NUT (V15653) (SPEC BACN107R3) (PRE SB 25-0218)	A-J	14
180D	F22K1-02		.NUT (V72962) (SPEC BACN10R10L) (OPT 22K1-02 (V72962)) (OPT 26CL02 (V80539)) (POST SB 25-0218)	A-J	14
R 182	69B52215-1		.BEARING (SUPSD BY ITEM 182A)	A-H	12
R -182A	69B52215-5		.BEARING (SUPSDS ITEM 182)		12
R 183	69B52215-3		.BEARING (SUPSD BY ITEM 183A)	A-H	1
R 183A	69B52215-6		.BEARING (SUPSDS ITEM 183)		1
185	69B53574-1		.PLATE-BACKING		14
190	69B52820-5		DELETED		
190A	69B52820-7		DELETED		
R 190B	69B52820-9		.BRACKET ASSY (SUPSDS ITEM 190C)	A,C, E,G, J,L	1
-190C	69B52820-7		.BRACKET ASSY (SUPSD BY ITEM 190B)	A,C, E,G	1

25-65-51

 ILLUSTRATED PARTS LIST
 01.1 Page 1024
 Mar 01/04

BOEING
COMPONENT
MAINTENANCE MANUAL

FIG. & ITEM	PART NO.	AIRLINE PART NUMBER	NOMENCLATURE 1234567	EFF CODE	QTY PER ASSY
01-					
-195	69B52820-6		DELETED		
-195A	69B52820-8		DELETED		
-195B	69B52820-10		.BRACKET ASSY (SUPSDS ITEM 195C)	B,D, F,H, K,M	1
-195C	69B52820-8		.BRACKET ASSY (SUPSD BY ITEM 195B)	B,D, F,H	1
200	NAS623-3-2		DELETED		
200A	BACB30LK3U2		.BOLT		1
201	NAS623-3-1		DELETED		
201A	BACB30LH3U1		.BOLT		1
202	NAS623-3-3		DELETED		
202A	BACB30LK3U3		.BOLT		1
205	NAS603-4P		DELETED		
205A	BACS12CK3U4		DELETED		
R 205B	BACS12CK3U5		.BOLT		2
210	NAS514P1032-4P		DELETED		
211	AN960-10L		DELETED		
-211A	AN960-10		DELETED		
211B	NAS1149C0332R		.WASHER- (OPT ITEM 211C)		AR
-211C	NAS1149C0363R		.WASHER- (OPT ITEM 211B)		AR
213	AN960-10L		DELETED		
213A	NAS1149C0332R		.WASHER		1
215	AN960PD10		DELETED		
215A	NAS1149C0363R		.WASHER		3
217	AN960-10		DELETED		
217A	NAS1149C0332R		.WASHER -----*		1
220	69B53599-1		DELETED		
R 220A	69B53599-3		..BEARING (OPT ITEM 220B)	A,C, E,G, J,L	1
R -220B	69B53599-5		..BEARING (PREF)	A,C, E,G, J,L	1
220C	69B53599-1		..BEARING	A,C, E,G	1

25-65-51

ILLUSTRATED PARTS LIST
01.1 Page 1025
Mar 01/04

FIG. & ITEM	PART NO.	AIRLINE PART NUMBER	NOMENCLATURE 1234567	EFF CODE	QTY PER ASSY
01-					
-225	69B53599-2		DELETED		
-225A	69B53599-4		..BEARING (OPT ITEM 225B)	B,D, F,H, K,M	1
R -225B	69B53599-6		..BEARING (PREF)	B,D, F,H, K,M	1
-225C	69B53599-2		..BEARING	B,D, F,H	1
227	BACB30LK3U2		..BOLT		1
230	BACW10P3C		..WASHER		1
235	BRH10C3		DELETED		
R 235A	H52732-3C		..NUT (V15653) (SPEC BACN10YR3C) (OPT PLH53C (V62554))		1
235B	BRH10C3		..NUT (V52828) (SPEC BACN10JC3C)	A-H	1
240	BACB30LU3-9		DELETED		
R 240A	BACB30LH3SU9		..BOLT		1
240B	BACB30LU3-9		..BOLT	A-H	1
242	BACW10P3C		..WASHER		1
245	69B52046-2		..SPACER		1
247	BRH10C3		DELETED		
R 247A	H52732-3C		..NUT (V15653) (SPEC BACN10YR3C) (OPT PLH53C (V62554))		1
247B	BRH10C3		..NUT (V52828) (SPEC BACN10JC3C)	A-H	1

25-65-51

 ILLUSTRATED PARTS LIST
 01.1 Page 1026
 Mar 01/04

FIG. & ITEM	PART NO.	AIRLINE PART NUMBER	NOMENCLATURE 1234567	EFF CODE	QTY PER ASSY
01-250	69B52818-5		..TRIGGER	A,C,E ,G,J, L	1
-255	69B52818-6		..TRIGGER	B,D,F ,H,K, M	1
257	69B58740-3		..BRACKET	A,C,E ,G,J, L	1
-260	69B58740-4		..BRACKET	B,D,F ,H,K, M	1
R 265	MS20427M4		..RIVET- (SIZE DETERMINE ON INST)		2
270	69B58740-5		..SHIM		1
275	69B52047-3		..STOP	A,C,E ,G,J, L	1
-280	69B52047-4		..STOP	B,D,F ,H,K, M	1
285	69B52815-5		DELETED		
285A	69B52815-7		..BRACKET	A,C,E ,G,J, L	1
-290	69B52815-6		DELETED		
-290A	69B52815-8		..BRACKET	B,D, F,H, K,M	1
292	BACS40R08W08		DELETED		
292A	BACS40R08W08		.SHIM	A,B, E,F	AR

25-65-51

FIG. & ITEM	PART NO.	AIRLINE PART NUMBER	NOMENCLATURE 1234567	EFF CODE	QTY PER ASSY
01-293	SL618-3C		.INSERT- (V97393)		5
R 293J	416T2005-24		.KIT ASSY-SUBSTITUTE (OPT ITEM 295A)	L,M	1
R 293M	NAS1801-5-17		..SCREW	L,M	1
R 293Q	NAS1149GN532P		..WASHER	L,M	1
R 294	69B52062-1		..PLATE	L,M	1
R 294L	940CW27-12		..JUMPER ASSY- (V91812) (SPEC BACJ40AB27-12) (OPT 100227-12 (V1FF12)) (OPT RBEJ40AB27-12 (V1GK47))	L,M	1
295	69B52058-2		DELETED		
295A	69B52058-4		.PLATE ASSY- (OPT ITEM 293J)	L,M	1
R -295B	69B52058-4		.PLATE ASSY ATTACHING PARTS	A-K	1
297	NAS1801-5-9		DELETED		
297A	NAS1801-5-17		DELETED		
R 300	NAS623-3-1		.SCREW		2
300A	NAS623-3-2		DELETED		
302	NAS1149GN532P		DELETED		
302A	NAS1149G0532P		DELETED		
305	AN960PD10		.WASHER -----*-----		2
310	69B51402-1		DELETED		
310A	69B51402-2		..BOLT	A-D, G-K	1
310B	69B51402-2		..BOLT (USED WITH ITEM 295A)	L,M	1
310C	NAS1801-5-17		..SCREW (PREF)		1
315	AN960-516L		..WASHER	A-D, G-K	1
315A	AN960-516L		..WASHER (USED WITH ITEM 310B)	L,M	1
315B	NAS1149G0532P		..WASHER (USED WITH ITEM 310C)		1
320	MS16562-6		..PIN-SPR	A-D G-K	1
320A	MS16562-6		..PIN-SPR (USED WITH ITEM 310B)	L,M	1

25-65-51

 ILLUSTRATED PARTS LIST
 01.1 Page 1028
 Mar 01/04

BOEING
COMPONENT
MAINTENANCE MANUAL

FIG. & ITEM	PART NO.	AIRLINE PART NUMBER	NOMENCLATURE 1234567	EFF CODE	QTY PER ASSY
01-325	940CW27-12		.. JUMPER ASSY- (V91812) (SPEC BACJ40AB27-12) (OPT 100227-12 (V1FF12)) (OPT RBEJ40AB27-12 (V1GK47)) (OPT ITEM 325A)		1
-325A	MS25083-2CD12		.. JUMPER ASSY- (OPT ITEM 325)		1
330	69B52062-1		.. PLATE		1
R 331J	416T2005-23		.KIT ASSY-SUBSTITUTE (OPT ITEM 335B)	L,M	3
R 331M	NAS1801-5-17		.. SCREW	L,M	6
R 331Q	NAS1149GN532P		.. WASHER	L,M	6
R 332	69B52062-1		.. PLATE	L,M	3
335	69B52058-1		DELETED		
335A	69B52058-3		.PLATE ASSY	A-D, G-K	3
R -335B	69B52058-3		.PLATE ASSY- (OPT ITEM 331J) ATTACHING PARTS	L,M	3
339	NAS1801-5-9		DELETED		
339A	NAS1801-5-17		DELETED		
R 340	NAS623-3-1		.SCREW		6
341	NAS623-3-2		DELETED		
342	NAS1149GN532P		DELETED		
342A	NAS1149G0532P		DELETED		
345	AN960PD10		.WASHER		6
			-----*-----		

25-65-51

FIG. & ITEM	PART NO.	AIRLINE PART NUMBER	NOMENCLATURE 1234567	EFF CODE	QTY PER ASSY
01-					
350	69B51402-1		DELETED		
350A	69B51402-2		..BOLT	A-D, G-K	1
350B	69B51402-2		..BOLT (USED WITH ITEM 335B)	L,M	3
350C	NAS1801-5-17		..SCREW (PREF)		3
355	AN960-516L		..WASHER	A-D, G-K	1
355A	AN960-516L		..WASHER (USED WITH ITEM 350B)	L,M	3
355B	NAS1149G0532P		..WASHER (USED WITH ITEM 350C)		3
360	MS16562-6		..PIN-SPR	A-D, G-K	1
365	69B52062-1		..PLATE		1
370	416T2013-1		.BAR ASSY-GIRT		2
375	BRFM20A5		..NUTPLATE- (V52828) (SPEC BACN10JN5) (OPT MF1300-5BAC (V15653)) (OPT NS103218-054 (V80539)) (OPT RMF9201M5 (V72962)) (OPT VN252A054 (V92215)) (OPT T8124S5S (V11815)) (OPT T8124S5S (V11815))		2
380	BACR15BA4D		..RIVET- (SIZE DETERMINE ON INST)		4
385	416T2013-2		DELETED		
385A	416T2013-3		..BAR		1
387	416T2320-1		.PLATE	C-M	2

25-65-51

 ILLUSTRATED PARTS LIST
 01.1 Page 1030
 Mar 01/04

|

FIG. & ITEM	PART NO.	AIRLINE PART NUMBER	NOMENCLATURE 1234567	EFF CODE	QTY PER ASSY
R 01-390	NAS514P1032-5P		.SCREW	A-D, G,H	18
-390G	NAS514P1032-6P		DELETED		
-390H	NAS514P1032		.SCREW	E,F	18
395	BACW10UC10P		.WASHER (V10630) (SPEC BACW10UC10P)		18
R 400	416T2005-3		.COVER- (REPLD BY ITEM 400H)	A,B	9
-400G	416T2005-15		DELETED		
-400H	416T2005-15		.COVER (REPLS ITEM 400)	E,F	9
402	416T2005-15		.COVER	C,D, G-M	9
403	416T2808-1		.FITTING ASSY- (OPT ITEM 403A)	C,D, G-M	4
-403A	416T2808-2		.FITTING ASSY- (OPT ITEM 403)	C,D, G-M	4
R -403B	416T2808-3		.FITTING ASSY (REPLS ITEM 405A)	E,F	4
403C	416T2808-1		DELETED		
R 403G	416T2808-2		.FITTING ASSY	C,D	2
403J	416T2808-2		DELETED		
403K	416T2808-2		.FITTING ASSY (REPLS ITEM 405A)	E,F	2
403L	416T2808-3		.FITTING ASSY	C,D, G-M	1
R -403M	416T2808-1		.FITTING ASSY (REPLS ITEM 405A)	E,F	1

25-65-51

FIG. & ITEM	PART NO.	AIRLINE PART NUMBER	NOMENCLATURE 1234567	EFF CODE	QTY PER ASSY
01-					
403P	416T2808-3		DELETED		
403R	416T2808-4		..FITTING ASSY	C,D, G-M	2
-403S	416T2808-2		..FITTING ASSY- (OPT ITEM 403T)	G-M	2
-403T	416T2808-3		..FITTING ASSY- (OPT ITEM 403S)	G-M	2
-403U	416T2808-4		DELETED		
-403W	416T2808-4		..FITTING ASSY (REPLS ITEM 405A)	E-F	2
404	BACR15BA3AD		..RIVET- (SIZE DETERMINE ON INST	C-M	2
404G	T8124S4S		..NUTPLATE- (V71087) (SPEC BACN10JN4) (OPT MF1000-4BAC (V15653)) (OPT NS103218-048 (V80539)) (OPT RMF9201M4 (V72962)) (OPT VN252A048 (V92215)) (OPT VN252A048 (V92215)) (OPT T8124S4S (V11815))	C-M	1
404L	416T2808-5		..FITTING- (USED ON ITEM 403)	C,D, G-M	1
R -404M	416T2808-5		..FITTING- (USED ON ITEM 403M)	E,F	1
R -404N	416T2808-6		..FITTING- (USED ON ITEM 403A)	C,D, G-M	1
404P	416T2808-6		..FITTING (USED ON ITEMS 403G, 403S)	C,D, G-M	1
404Q	416T2808-6		DELETED		
-404R	416T2808-7		..FITTING (USED ON ITEM 403T)	E,F	1
404S	416T2808-6		..FITTING (USED ON ITEM 403K)	E,F	1
404T	416T2808-7		..FITTING (USED ON ITEM 403L)	C,D, G-M	1
R -404V	416T2808-7		..FITTING (USED ON ITEM 403B)	E,F	1

25-65-51

 **BOEING**
COMPONENT
MAINTENANCE MANUAL

FIG. & ITEM	PART NO.	AIRLINE PART NUMBER	NOMENCLATURE 1234567	EFF CODE	QTY PER ASSY
01-404X	416T2808-8		..FITTING (USED ON ITEM 403R)	C,D, G-M	1
-404Y	416T2808-8		..FITTING (USED ON ITEM 403W)	E,F	1
-404Z	416T2808-8		DELETED		
405	65B52466-1		DELETED		
405A	65B52466-1		.FITTING ASSY ATTACHMENT (REPLD BY ITEMS 403B, 403K,403M,403W)	A,B	9
410	T8124S4S		DELETED		
410A	T8124S4S		..NUTPLATE (V71087) (SPEC BACN10JN4) ATTACHING PARTS	A,B	1
415	BACR15BA3D		DELETED		
415A	BACR15BA3D		..RIVET (SIZE DETERMINE ON INST) -----*-----	A,B	2
420	65B52466-2		DELETED		
420A	65B52466-2		..FITTING	A,B	1
422	BACS40R08D08		DELETED		
422A	BACS40R08D08		.SHIM (OPT ITEM 422D (QTY 2))	A,B	AR
422D	BACS40R08B08F		.SHIM (OPT ITEM 422A (QTY 1))	E,F	AR
422G	BACS40R08B08F		DELETED		
423	BACS40R08B08F		DELETED		
423A	BACS40R08B08F		.SHIM	C,D, G-M	18

25-65-51

ILLUSTRATED PARTS LIST
01.1 Page 1033
Mar 01/04

FIG. & ITEM	PART NO.	AIRLINE PART NUMBER	NOMENCLATURE 1234567	EFF CODE	QTY PER ASSY
01-					
425	416T2026-1		DELETED		
425A	416T2026-17		DELETED		
R 425B	416T2026-19		.PACKBOARD ASSY	A,E	1
R -425C	416T2026-21		.PACKBOARD ASSY	C	1
R -425D	416T2026-23		.PACKBOARD ASSY- (OPT ITEM 425E)	G	1
R -425E	416T2026-25		.PACKBOARD ASSY- (OPT ITEM 425D)	G	1
R -425F	416T2026-25		.PACKBOARD ASSY	J,L	1
-430	416T2026-2		DELETED		
-430A	416T2026-18		DELETED		
R -430B	416T2026-20		.PACKBOARD ASSY	B,F	1
R -430C	416T2026-22		.PACKBOARD ASSY	D	1
R -430D	416T2026-24		.PACKBOARD ASSY- (OPT ITEM 430E)	H	1
R -430E	416T2026-26		.PACKBOARD ASSY- (OPT ITEM 430D)	H	1
-430F	416T2026-26		.PACKBOARD ASSY	K,M	1
435	NAS1834C3-290		..INSERT		14
440	NAS1834C4K312		..INSERT		2
445	SL618-3C		..INSERT- (V97393)		26
450	NAS1834C3-580		..INSERT		14
455	BACG20Z51321B		DELETED		
455A	BACG20ZS1321B		.GROMMET		1

- Item Not Illustrated

25-65-51

 ILLUSTRATED PARTS LIST
 01.1 Page 1034
 Mar 01/04